



SeeGull® EXflex™ Scanning Receiver

Flexible Mobile Network Testing

If you've ever wondered why it's so hard to get a single cell phone that works everywhere in the world, the answer is simple: frequency bands and wireless technology. Different regions around the world have approved different frequency bands for wireless services, while network operators use different sets of wireless technologies. To move from one network to another, cell phone hardware—and network test equipment—needs to support dozens of bands and multiple wireless technologies.

Cell phones and traditional network test equipment use hardware that operates only on a limited number of fixed bands. The EXflex is different. Its flexibility comes from a tunable front end that allows it to measure all wireless technologies anywhere in the band range of 30 MHz to 6 GHz.



All Major Wireless Network Bands

There is no limit to the number of frequency bands the EXflex can support within its band range.

Benefit: Decrease test equipment expenditures by using a single scanning receiver for worldwide wireless testing.

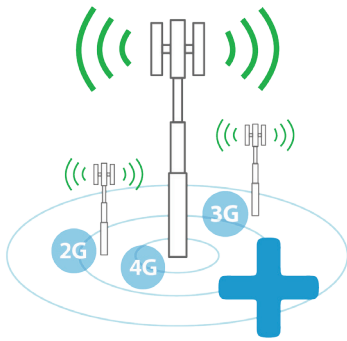


Up to 7 Technologies

Multiple Technologies

The EXflex simultaneously supports measurements across all major wireless technologies, including LTE FDD, TD-LTE, UMTS, TD-SCDMA, GSM, CDMA, and EV-DO, in a single scanner.

Benefit: Increase testing efficiency by using the same equipment to test multiple technologies and bands, all at once.



Future Proof: Add New Bands and Technologies in the Field

The EXflex is designed for change. With a simple field upgrade, you can add bands within its band range of 30 MHz to 6 GHz, as well as new wireless technologies, as soon as they're required.

Benefit: Extends useful life of test equipment, even as networks evolve and spectrum allocations change.



No Need to Carry Multiple Pieces of Hardware

Some scanning receivers are limited to a few technologies or bands, while others require separate modules. With the EXflex, everything you need is in one small testing unit.

Benefit: Reduce weight and complexity for in-building wireless testing.



Upgrades via Software

The EXflex is software upgradable in the field, so you'll never have to wait for modules or send units in for factory upgrades.

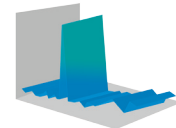
Benefit: Eliminate delays and down time associated with band, technology or feature upgrades.



Reduce e-Waste

Since the EXflex moves from project to project, and from network to network, equipment life can be extended and e-waste reduced.

Benefit: Cleaner landfills and a healthier environment.



Measure Beyond Mobile Bands

The EXflex conducts spectrum analysis and other measurements anywhere in its band range—not just on pre-defined mobile bands.

Benefit: Increase testing capabilities by testing WiFi bands, performing spectrum clearing, and identifying out-of-band interference with ease.

